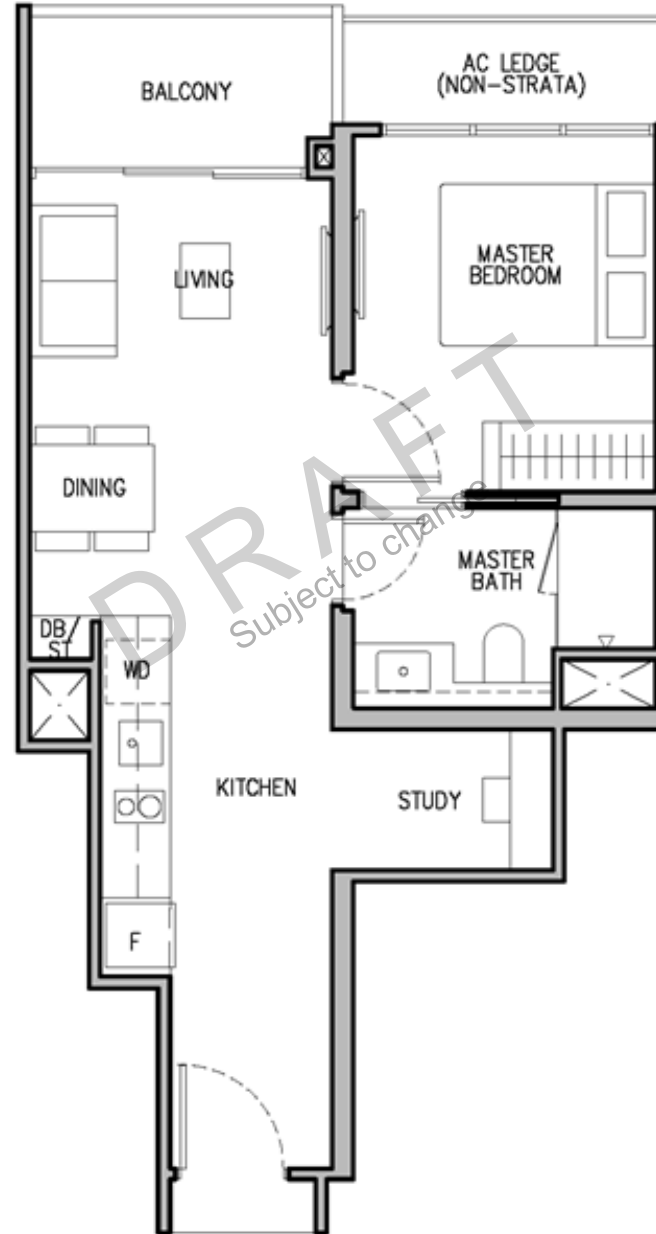


1 – BEDROOM + STUDY

Type A1S

48sqm/517sqft
(estimated area)

*Floor Plans and area are
pending authorities' approval
and subject to change*

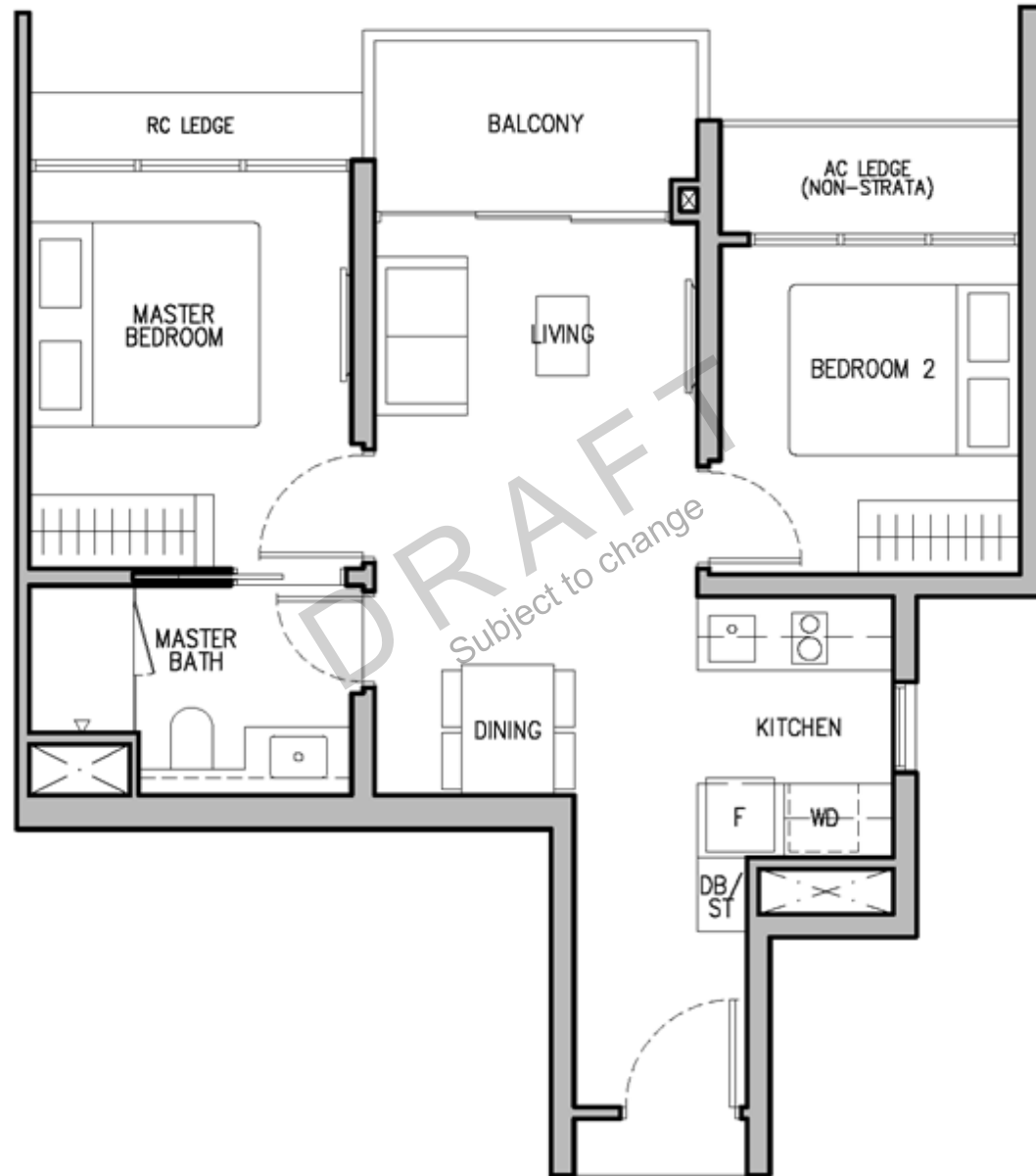


2 – BEDROOM (1 BATH)

Type B1

55sqm/592sqft
(estimated area)

*Floor Plans and area are
pending authorities' approval
and subject to change*



PLANS ARE NOT DRAWN TO SCALE

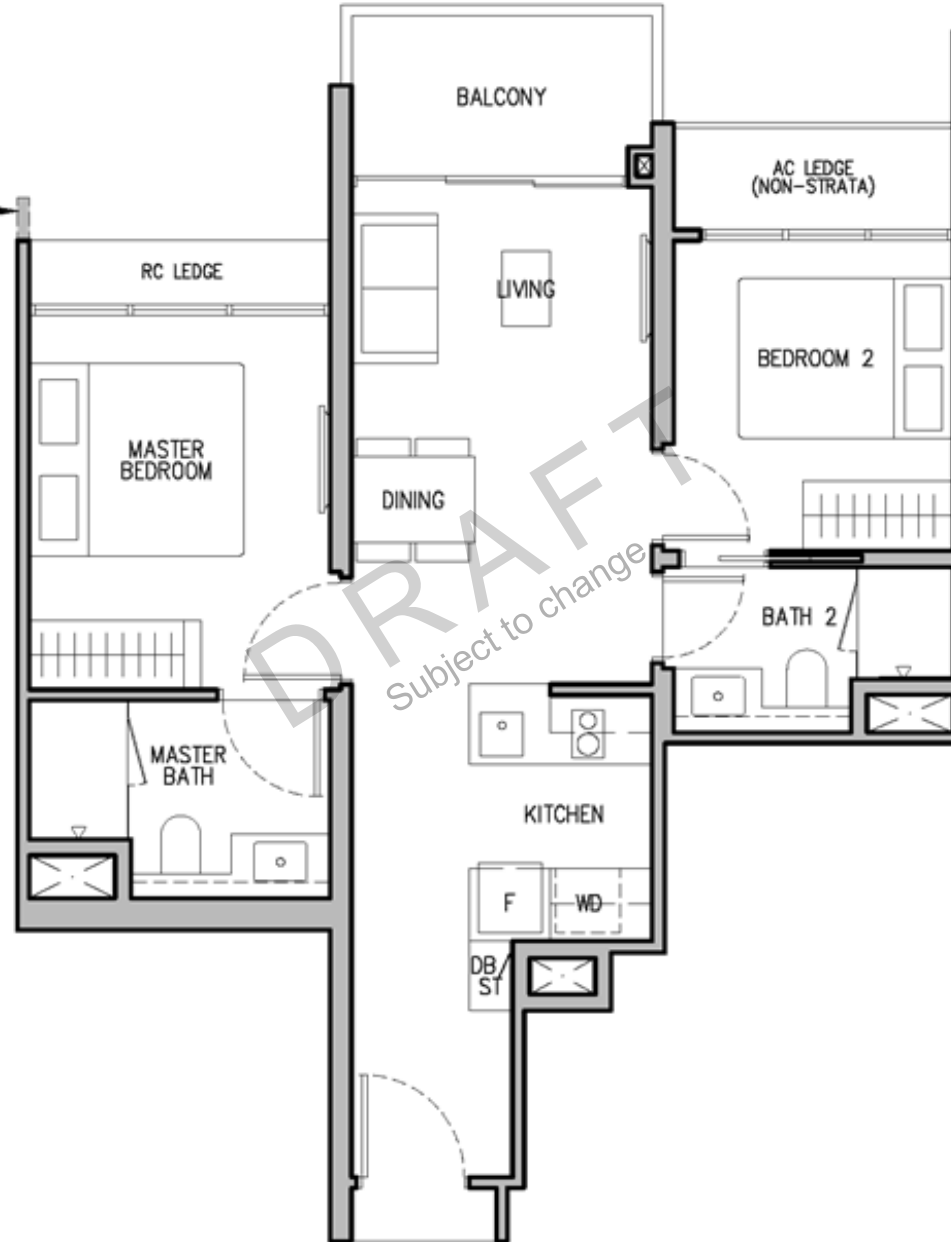
2 – BEDROOM (2 BATH)

Type B2

60sqm/646sqft
(estimated area)

Floor Plans and area are pending authorities' approval and subject to change

WALL FOR
#11-01 to #19-01,
#31-01 to #40-01,
#11-11 to #19-11,
#31-11 to #40-11



N
KEYPLAN IS NOT DRAWN TO SCALE

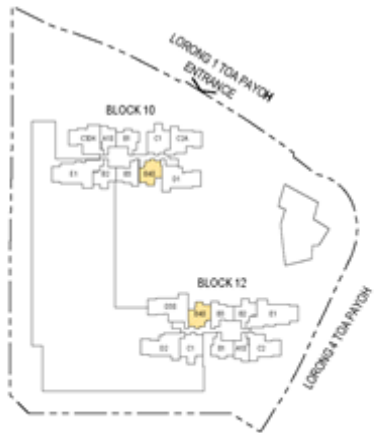
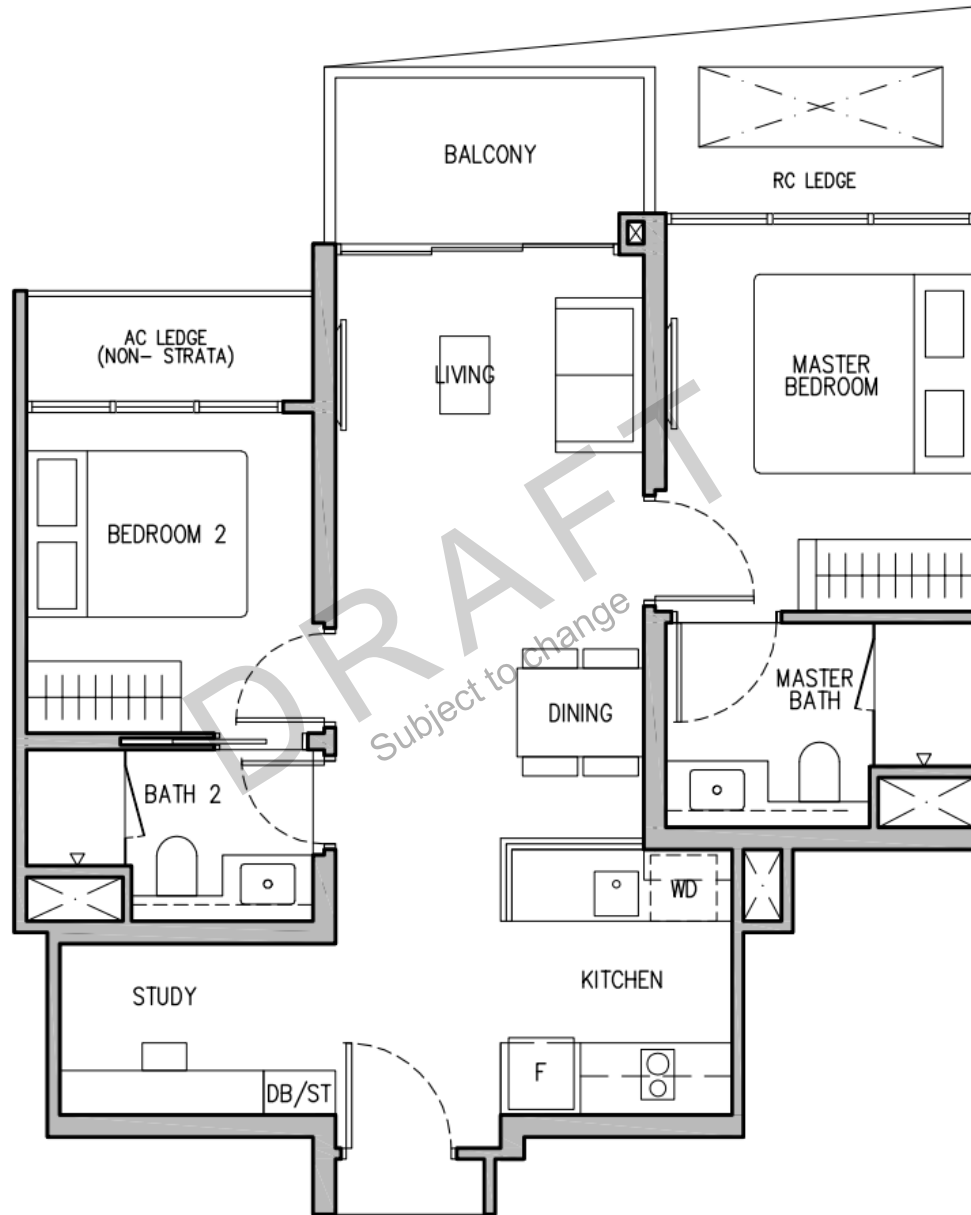
PLANS ARE NOT DRAWN TO SCALE

2 – BEDROOM PREMIUM + STUDY

Type B4S

65sqm/700sqft
(estimated area)

*Floor Plans and area are
pending authorities' approval
and subject to change*



KEYPLAN IS NOT DRAWN TO SCALE

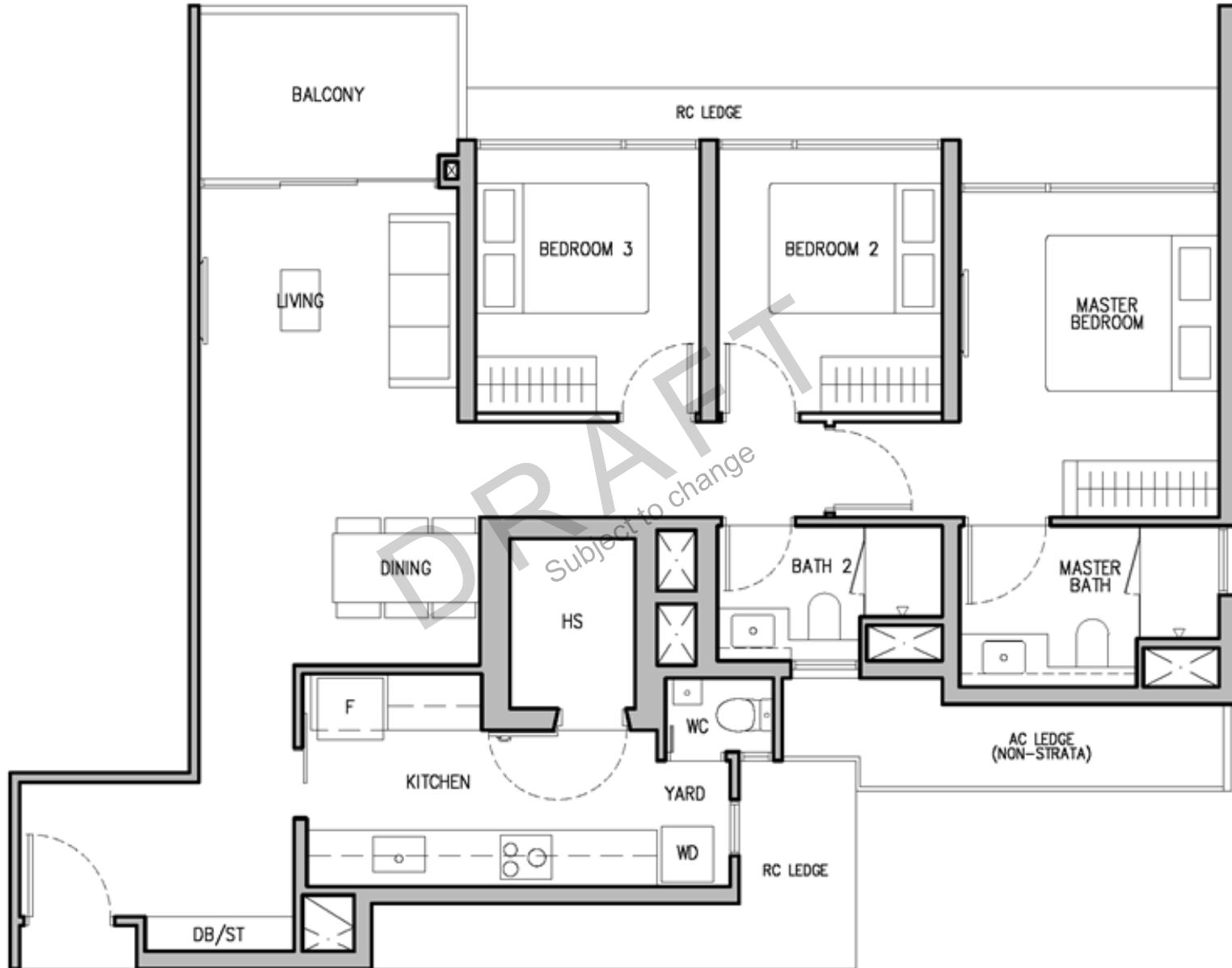
PLANS ARE NOT DRAWN TO SCALE

3 – BEDROOM PREMIUM

Type C2A

97sqm/1044sqft
(estimated area)

Floor Plans and area are pending authorities' approval and subject to change



KEYPLAN IS NOT DRAWN TO SCALE

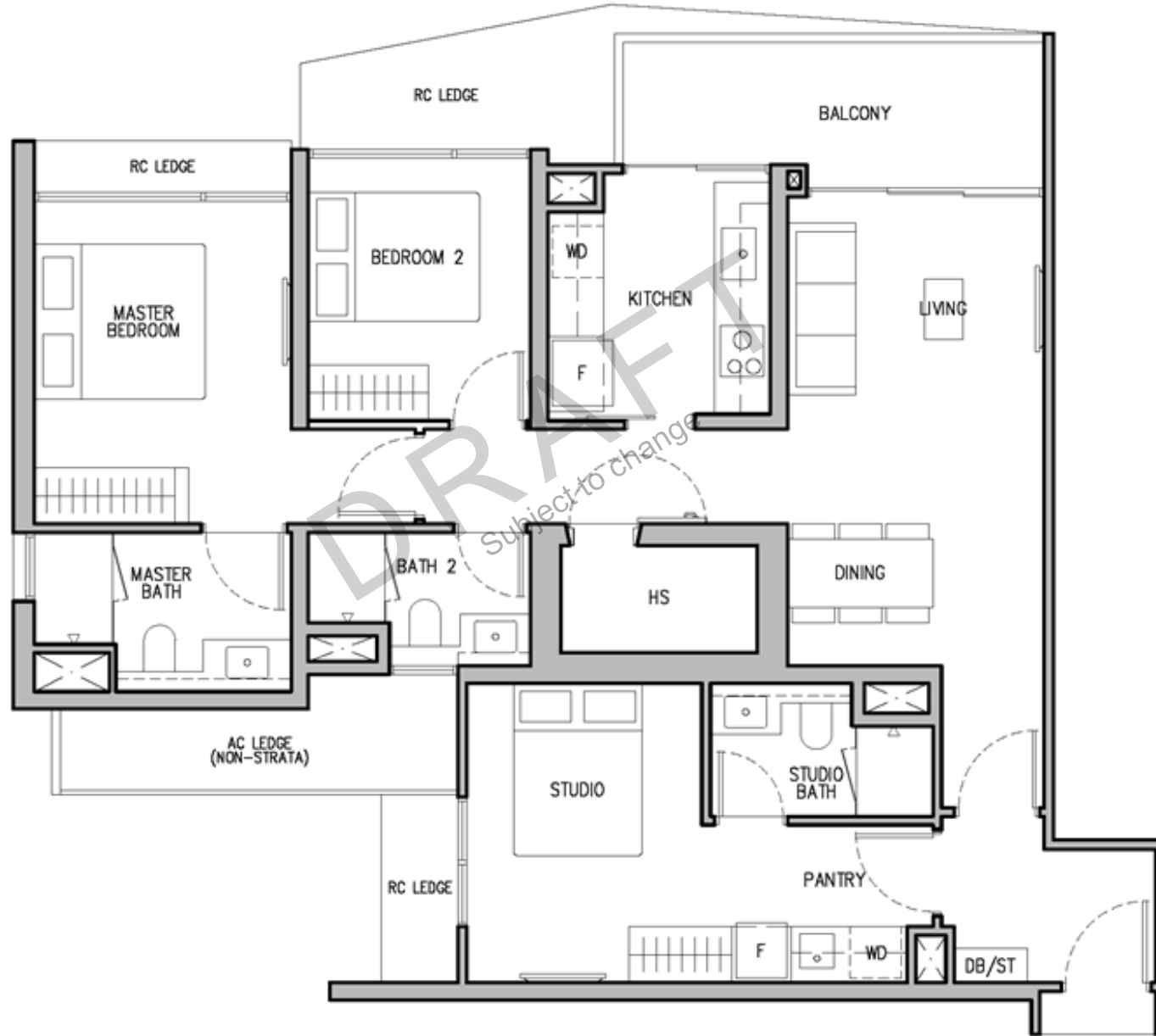
PLANS ARE NOT DRAWN TO SCALE

3 – BEDROOM PREMIUM DUAL-KEY

Type C3DK

105sqm/1130sqft
(estimated area)

Floor Plans and area are pending authorities' approval and subject to change



N
KEYPLAN IS NOT DRAWN TO SCALE

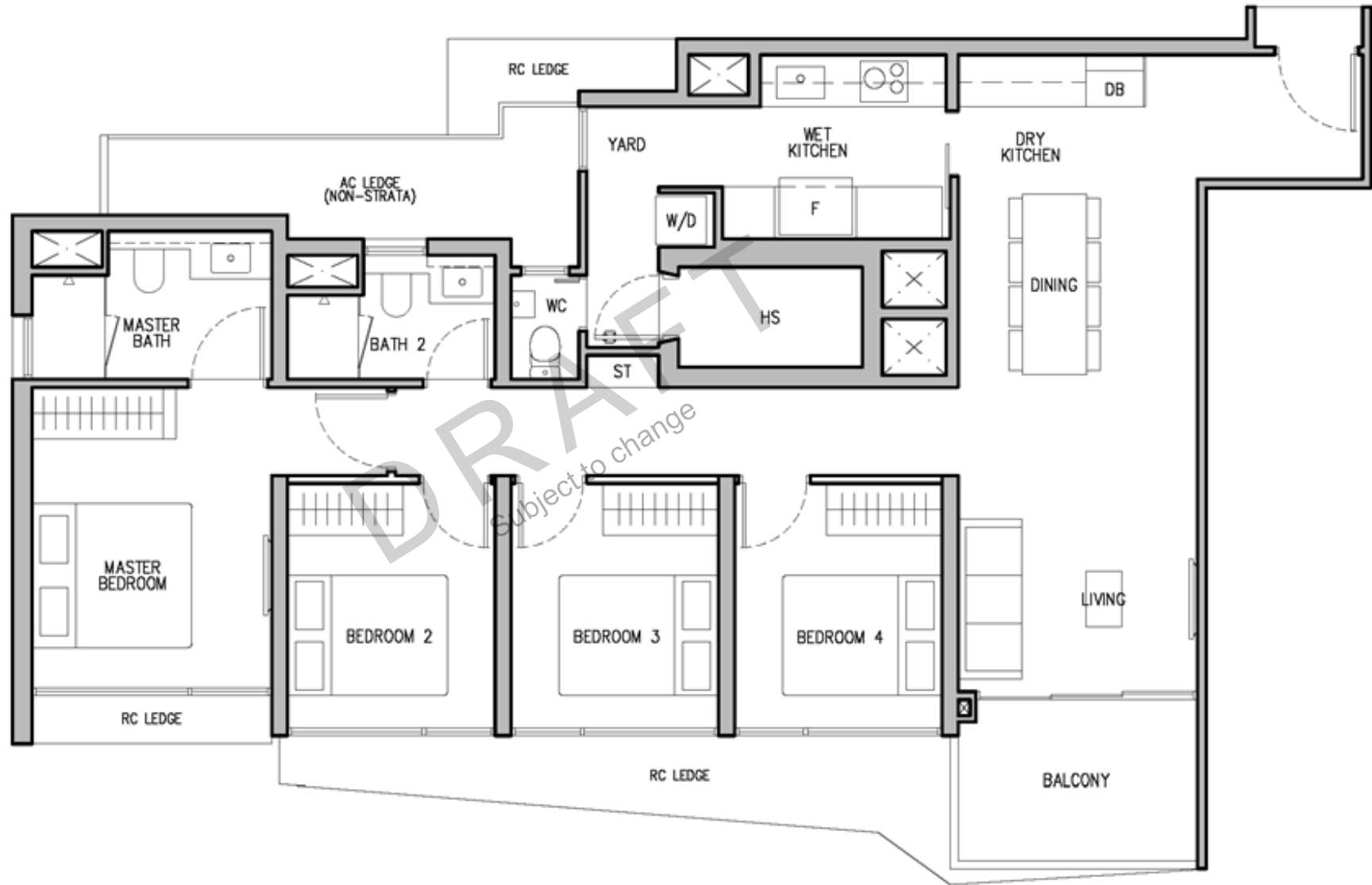
PLANS ARE NOT DRAWN TO SCALE

4 – BEDROOM

Type D2

113sqm/1216sqft
(estimated area)

*Floor Plans and area are
pending authorities' approval
and subject to change*



N
KEYPLAN IS NOT DRAWN TO SCALE

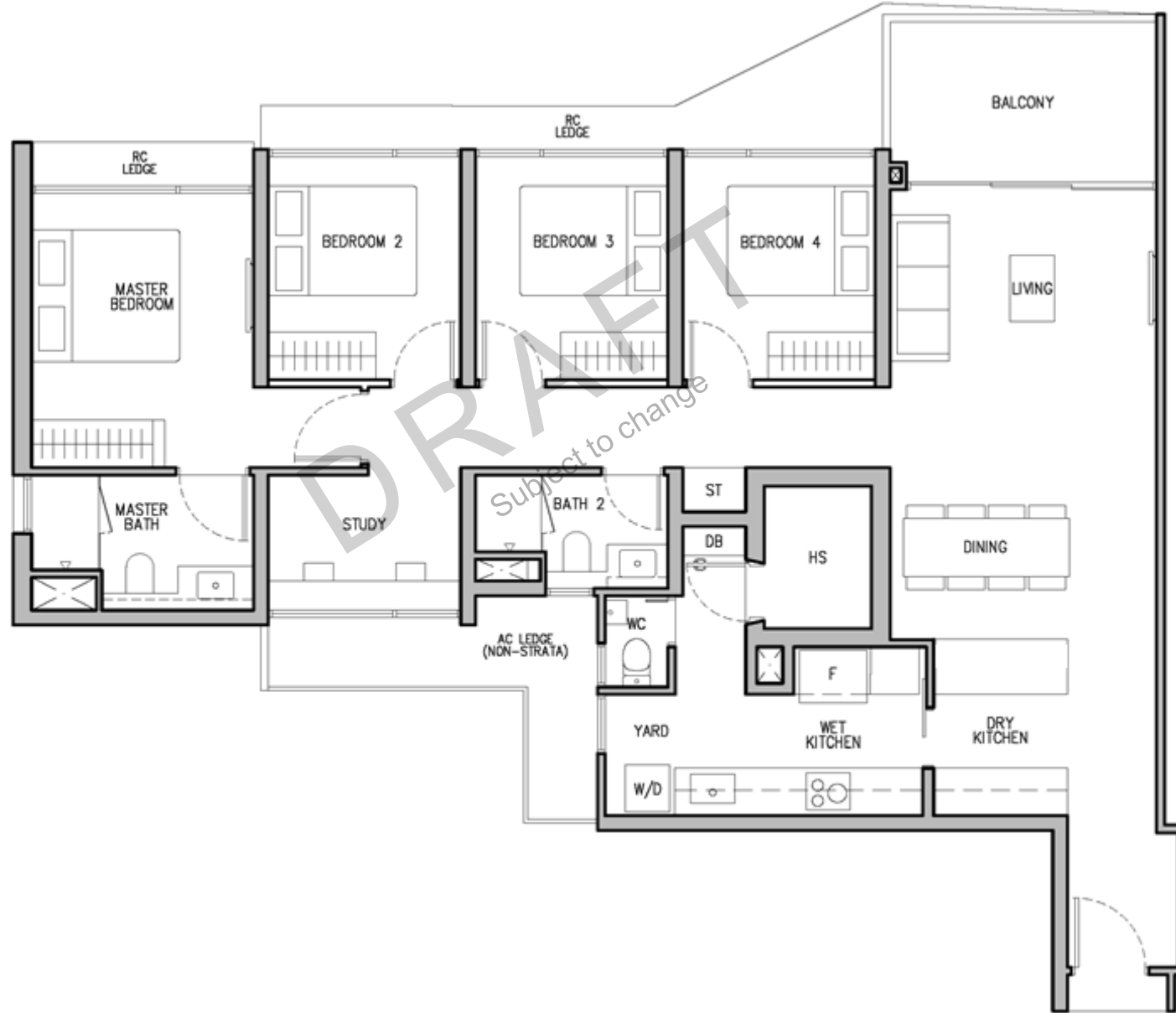
PLANS ARE NOT DRAWN TO SCALE

4 – BEDROOM PREMIUM + STUDY

Type D3S

127sqm/1367sqft
(estimated area)

Floor Plans and area are pending authorities' approval and subject to change



N
KEYPLAN IS NOT DRAWN TO SCALE

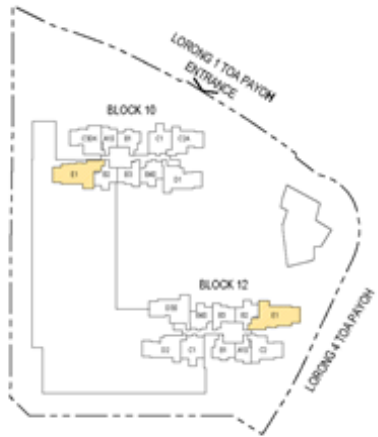
PLANS ARE NOT DRAWN TO SCALE

5 – BEDROOM (WITH PRIVATE LIFT)

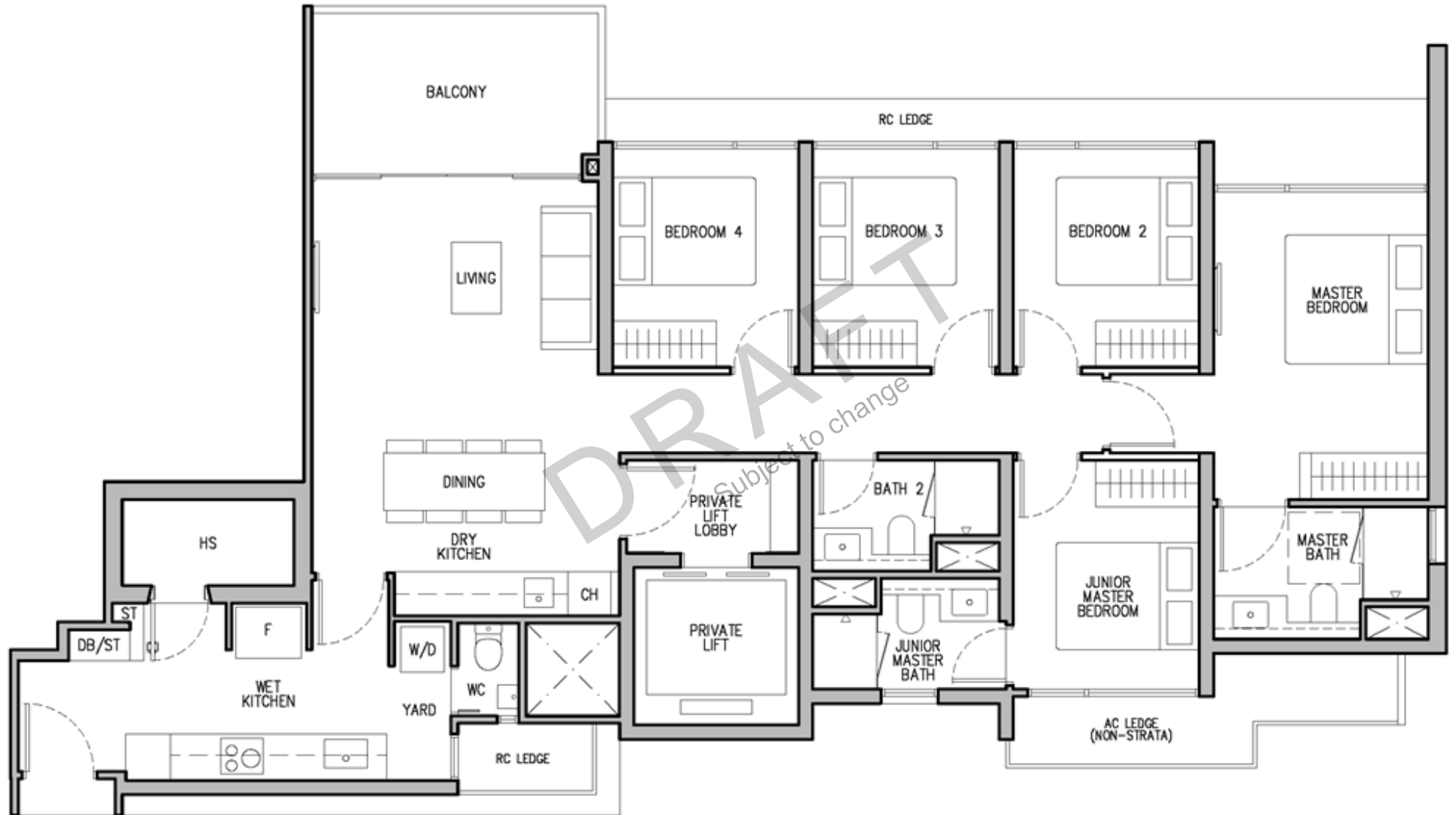
Type E1

135sqm/1453sqft
(estimated area)

Floor Plans and area are pending authorities' approval and subject to change



N
KEYPLAN IS NOT DRAWN TO SCALE



PLANS ARE NOT DRAWN TO SCALE